

NOTES:
 1) FOR OPTIMAL REINFORCEMENT PLACEMENT IN THE NUDURA FORM, SPACING OF HORIZONTAL REINFORCEMENT TO BE SPECIFIED AT 18" (457mm) O.C. AND VERTICAL REINFORCEMENT TO BE SPECIFIED AT MULTIPLES OF 8" (203mm) O.C. REFER TO NUDURA REINFORCEMENT PLACEMENT DETAILS.

This detail is for general informational purposes only. The project design professional determines, in its sole discretion, whether this detail or a functionally equivalent detail is best suited for the project with respect to any architecture, engineering, and design requirements, including any local building code requirements. If this document is not reviewed and the product is not approved for use by a licensed design professional, the customer agrees that the detail may contain substantive flaws requiring correction, and hereby releases Tremco CPG Inc. from any and all liability related to the design and installation of the product. This detail is subject to change without notice. Contact Tremco to ensure you have the most recent version.

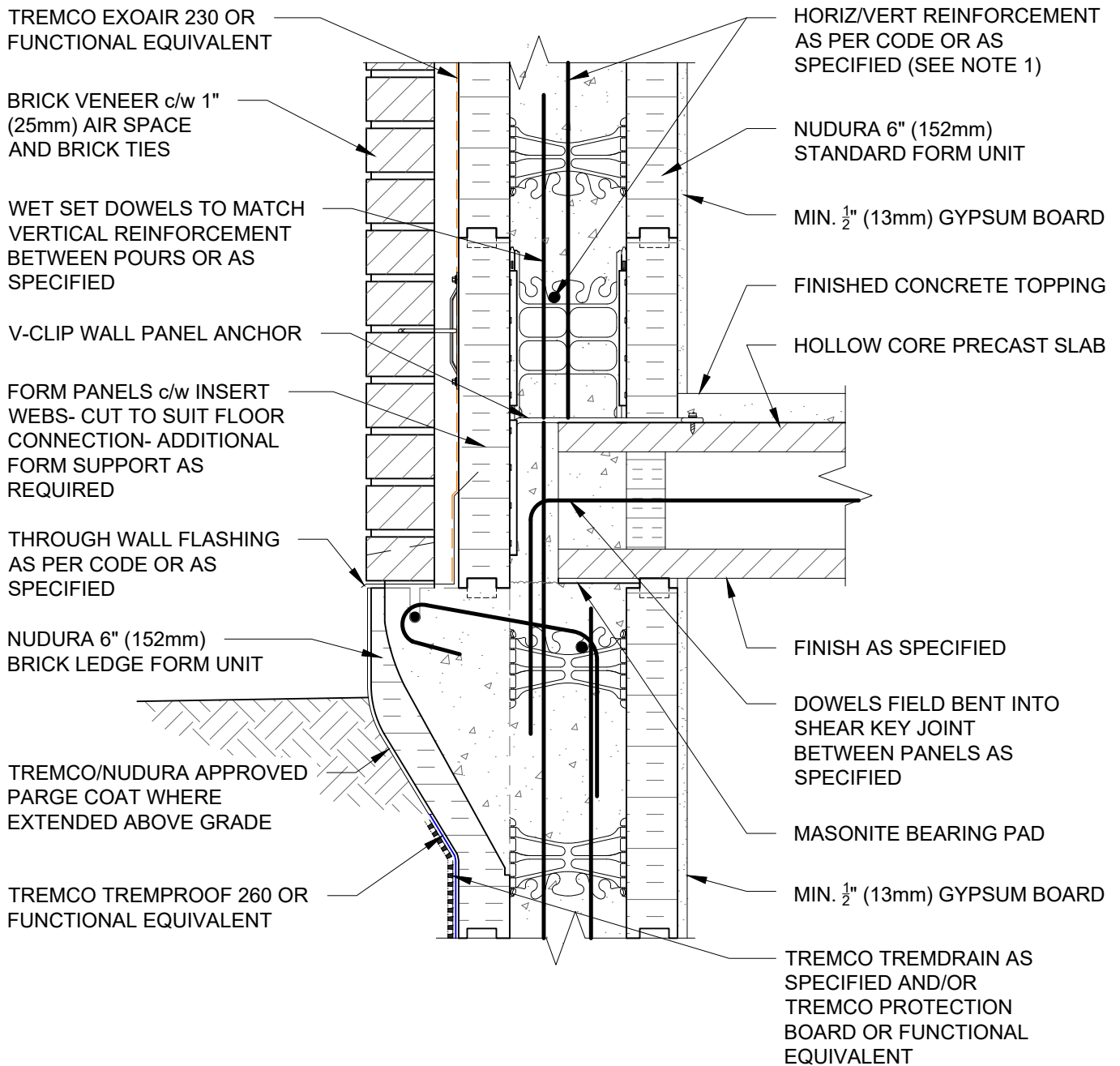
Non-Combustible Construction - Grade at Floor



Detail: Nudura 6" (152mm) Form Unit, Hollow Core Precast Slab, Exterior Side Wall, Exterior Finish as Specified		
Drawn by: JN	Checked by: KS	Scale: 1:8
Revision #: 07	Revised by: KAB	Date: 3/13/2024

File Name:
D6A02





NOTES:
 1) FOR OPTIMAL REINFORCEMENT PLACEMENT IN THE NUDURA FORM, SPACING OF HORIZONTAL REINFORCEMENT TO BE SPECIFIED AT 18" (457mm) O.C. AND VERTICAL REINFORCEMENT TO BE SPECIFIED AT MULTIPLES OF 8" (203mm) O.C. REFER TO NUDURA REINFORCEMENT PLACEMENT DETAILS.

This detail is for general informational purposes only. The project design professional determines, in its sole discretion, whether this detail or a functionally equivalent detail is best suited for the project with respect to any architecture, engineering, and design requirements, including any local building code requirements. If this document is not reviewed and the product is not approved for use by a licensed design professional, the customer agrees that the detail may contain substantive flaws requiring correction, and hereby releases Tremco CPG Inc. from any and all liability related to the design and installation of the product. This detail is subject to change without notice. Contact Tremco to ensure you have the most recent version.

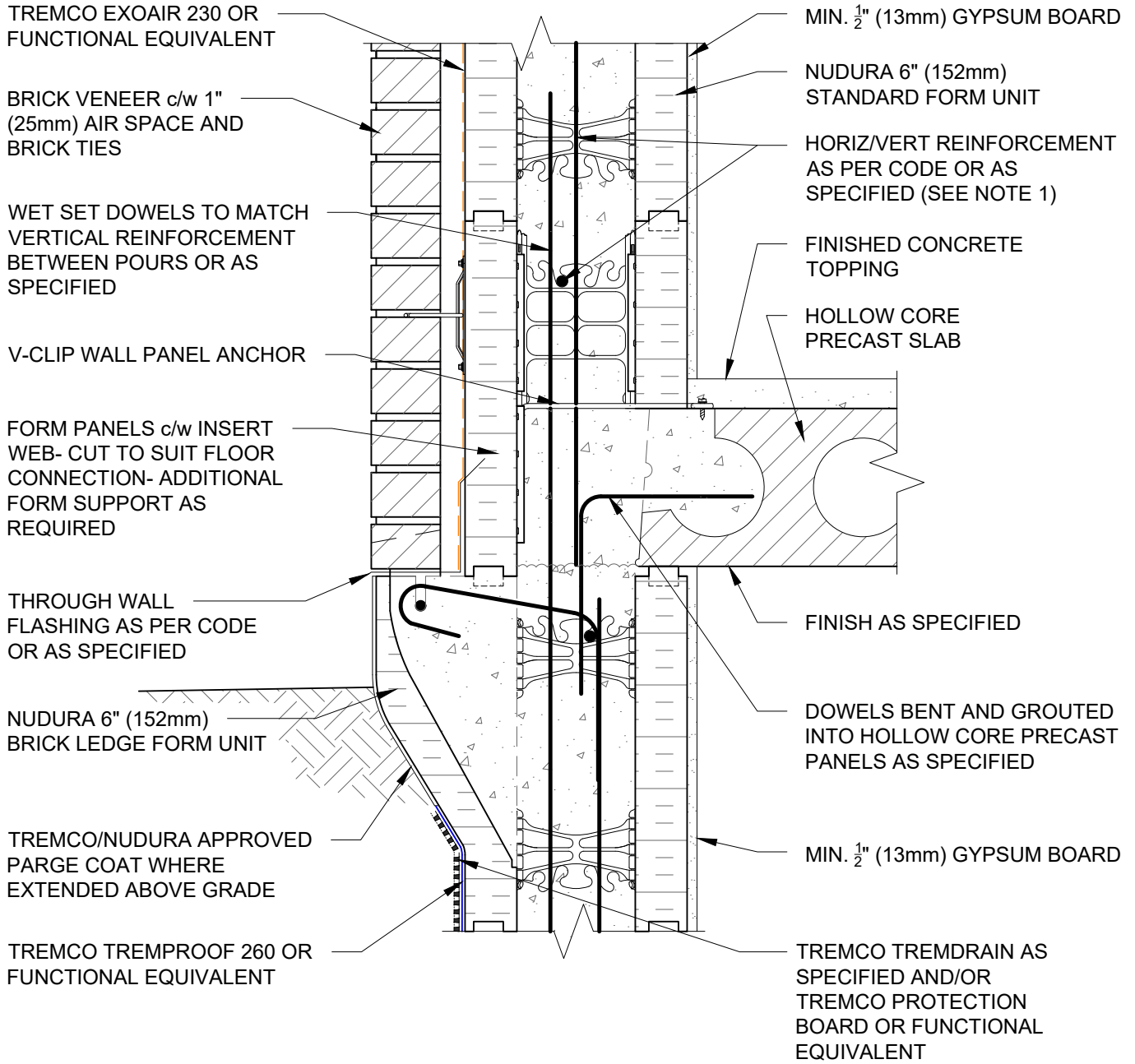
Non-Combustible Construction - Grade at Floor



Detail: Nudura 6" (152mm) Brick Ledge Form Unit, Hollow Core Precast Slab, Bearing Wall, Brick Veneer Finish		
Drawn by: JN	Checked by: KS	Scale: 1:8
Revision #: 05	Revised by: KAB	Date: 3/13/2024

File Name:
D6A03





NOTES:
 1) FOR OPTIMAL REINFORCEMENT PLACEMENT IN THE NUDURA FORM, SPACING OF HORIZONTAL REINFORCEMENT TO BE SPECIFIED AT 18" (457mm) O.C. AND VERTICAL REINFORCEMENT TO BE SPECIFIED AT MULTIPLES OF 8" (203mm) O.C. REFER TO NUDURA REINFORCEMENT PLACEMENT DETAILS.

This detail is for general informational purposes only. The project design professional determines, in its sole discretion, whether this detail or a functionally equivalent detail is best suited for the project with respect to any architecture, engineering, and design requirements, including any local building code requirements. If this document is not reviewed and the product is not approved for use by a licensed design professional, the customer agrees that the detail may contain substantive flaws requiring correction, and hereby releases Tremco CPG Inc. from any and all liability related to the design and installation of the product. This detail is subject to change without notice. Contact Tremco to ensure you have the most recent version.

Non-Combustible Construction - Grade at Floor



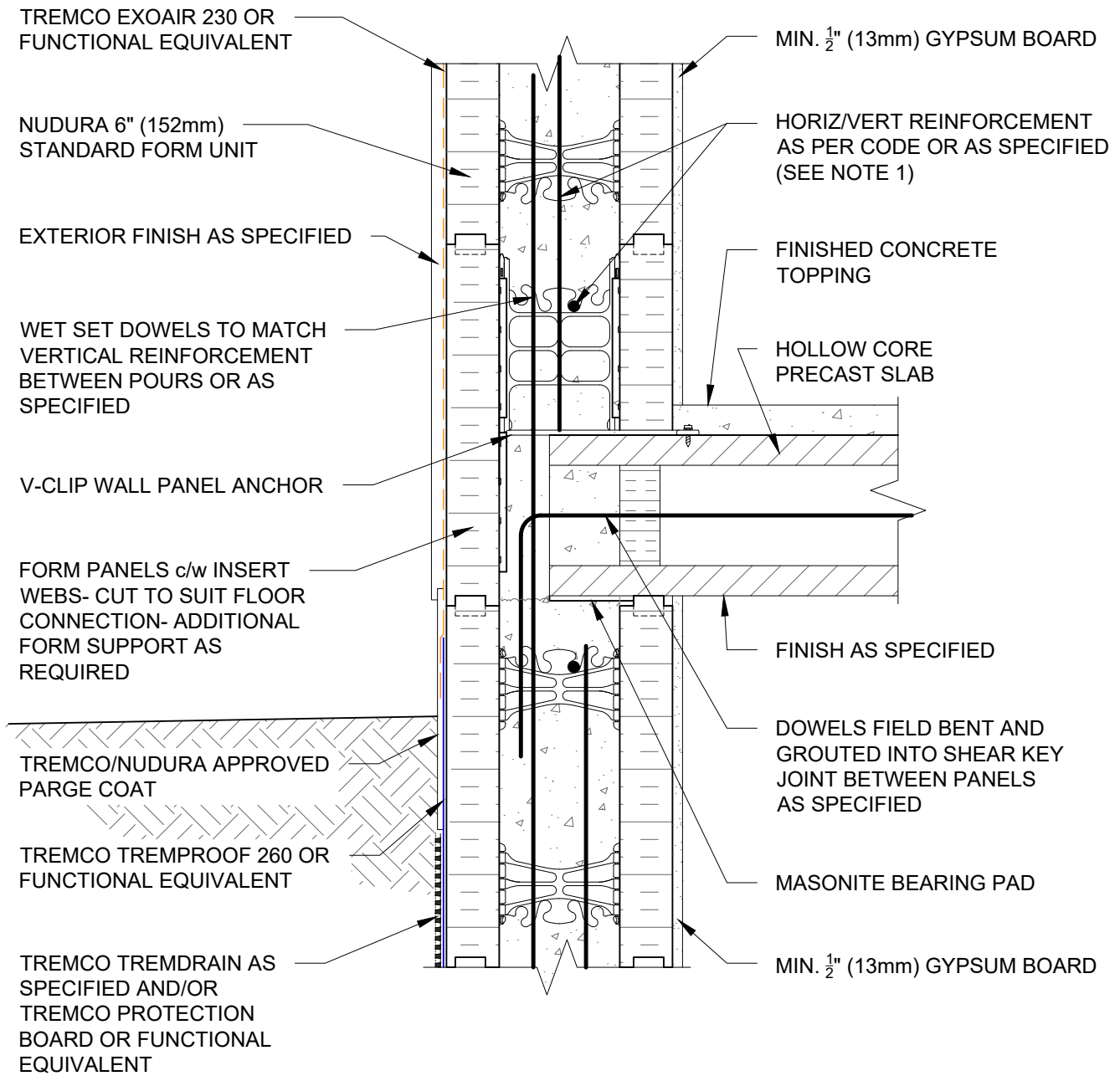
Detail: Nudura 6" (152mm) Brick Ledge Form Unit, Hollow Core Precast Slab, Exterior Side Wall, Brick Veneer Finish

Drawn by: JN	Checked by: KS	Scale: 1:8
Revision #: 05	Revised by: KAB	Date: 3/13/2024

File Name:

D6A04





NOTES:

1) FOR OPTIMAL REINFORCEMENT PLACEMENT IN THE NUDURA FORM, SPACING OF HORIZONTAL REINFORCEMENT TO BE SPECIFIED AT 18" (457mm) O.C. AND VERTICAL REINFORCEMENT TO BE SPECIFIED AT MULTIPLES OF 8" (203mm) O.C. REFER TO NUDURA REINFORCEMENT PLACEMENT DETAILS.

This detail is for general informational purposes only. The project design professional determines, in its sole discretion, whether this detail or a functionally equivalent detail is best suited for the project with respect to any architecture, engineering, and design requirements, including any local building code requirements. If this document is not reviewed and the product is not approved for use by a licensed design professional, the customer agrees that the detail may contain substantive flaws requiring correction, and hereby releases Tremco CPG Inc. from any and all liability related to the design and installation of the product. This detail is subject to change without notice. Contact Tremco to ensure you have the most recent version.

Non-Combustible Construction - Grade at Floor



Detail: Nudura 6" (152mm) Form Unit, Hollow Core Precast Slab, Exterior Bearing Wall, Exterior Finish as Specified			File Name:
Drawn by: JN	Checked by: KS	Scale: 1:8	D6A07
Revision #: 05	Revised by: KAB	Date: 3/13/2024	

www.tremcocpg.com



NUDURA 6" (152mm)
STANDARD FORM UNIT

TREMCO EXOAIR 230 OR
FUNCTIONAL EQUIVALENT

EXTERIOR FINISH AS SPECIFIED

WET SET DOWELS TO
MATCH VERTICAL
REINFORCEMENT
BETWEEN POURS OR
AS SPECIFIED

HORIZ/VERT REINFORCEMENT
AS PER CODE OR AS
SPECIFIED (SEE NOTE 1)

TREMCO/NUDURA APPROVED
PARGE COAT

TREMCO TREMPROOF 260 OR
FUNCTIONAL EQUIVALENT

TREMCO TREMDRAIN AS
SPECIFIED AND/OR
TREMCO PROTECTION
BOARD OR FUNCTIONAL
EQUIVALENT

MIN. 1/2" (13mm) GYPSUM BOARD

FORM PANELS c/w INSERT
WEBS- CUT TO SUIT FLOOR
CONNECTION- ADDITIONAL
FORM SUPPORT AS REQUIRED

ALLOW FLOOR SLAB TO REST ON
TO BEARING WALL CONCRETE

EPS FOAM REMOVED AT JOIST
LOCATIONS ONLY TO ALLOW
JOIST PLACEMENT

PROPRIETARY STEEL
JOIST FLOOR SYSTEM

CEILING FINISH AS PER STEEL JOIST
MANUFACTURERS SPECIFICATION
(SEE NOTE 2)

MIN. 1/2" (13mm) GYPSUM BOARD

NOTES:

1) FOR OPTIMAL REINFORCEMENT PLACEMENT IN THE NUDURA FORM, SPACING OF HORIZONTAL REINFORCEMENT TO BE SPECIFIED AT 18" (457mm) O.C. AND VERTICAL REINFORCEMENT TO BE SPECIFIED AT MULTIPLES OF 8" (203mm) O.C. REFER TO NUDURA REINFORCEMENT PLACEMENT DETAILS.

2) WHERE GYPSUM BOARD IS REQUIRED TO COMPLETE FIRE RATED ASSEMBLY, EPS FOAM KERF CUT TO ENABLE CEILING FINISH TO PROVIDE THERMAL BARRIER CONTACT TO CONCRETE.

This detail is for general informational purposes only. The project design professional determines, in its sole discretion, whether this detail or a functionally equivalent detail is best suited for the project with respect to any architecture, engineering, and design requirements, including any local building code requirements. If this document is not reviewed and the product is not approved for use by a licensed design professional, the customer agrees that the detail may contain substantive flaws requiring correction, and hereby releases Tremco CPG Inc. from any and all liability related to the design and installation of the product. This detail is subject to change without notice. Contact Tremco to ensure you have the most recent version.

Non-Combustible Construction - Grade at Floor

Detail: Nudura 6" (152mm) Form Unit, Steel Joist Floor System, Exterior Wall,
Exterior Finish as Specified

File Name:

Drawn by: JN

Checked by: KS

Scale: 1:8

D6B01

Revision #: 06

Revised by: KAB

Date: 3/13/2024



Nudura Technical Support: 866-468-6299
International: +1 705-726-9499

www.tremcocpg.com



Construction Products Group

NUDURA 6" (152mm)
STANDARD FORM UNIT

TREMCO EXOAIR 230 OR
FUNCTIONAL EQUIVALENT

EXTERIOR FINISH AS SPECIFIED

WET SET DOWELS TO
MATCH VERTICAL
REINFORCEMENT
BETWEEN POURS OR
AS SPECIFIED

HORIZ/VERT REINFORCEMENT
AS PER CODE OR AS
SPECIFIED (SEE NOTE 1)

TREMCO/NUDURA APPROVED
PARGE COAT

TREMCO TREMPROOF 260 OR
FUNCTIONAL EQUIVALENT

TREMCO TREMDRAIN AS
SPECIFIED AND/OR
TREMCO PROTECTION
BOARD OR FUNCTIONAL
EQUIVALENT

MIN. 1/2" (13mm) GYPSUM BOARD

FORM PANELS c/w INSERT
WEBS- CUT TO SUIT FLOOR
CONNECTION- ADDITIONAL
FORM SUPPORT AS REQUIRED

ALLOW FLOOR SLAB TO REST ON
TO BEARING WALL CONCRETE

PROPRIETARY STEEL
JOIST FLOOR SYSTEM

CEILING FINISH AS PER STEEL JOIST
MANUFACTURERS SPECIFICATION
(SEE NOTE 2)

MIN. 1/2" (13mm) GYPSUM BOARD

NOTES:

1) FOR OPTIMAL REINFORCEMENT PLACEMENT IN THE NUDURA FORM, SPACING OF HORIZONTAL REINFORCEMENT TO BE SPECIFIED AT 18" (457mm) O.C. AND VERTICAL REINFORCEMENT TO BE SPECIFIED AT MULTIPLES OF 8" (203mm) O.C. REFER TO NUDURA REINFORCEMENT PLACEMENT DETAILS.

2) WHERE GYPSUM BOARD IS REQUIRED TO COMPLETE FIRE RATED ASSEMBLY, EPS FOAM KERF CUT TO ENABLE CEILING FINISH TO PROVIDE THERMAL BARRIER CONTACT TO CONCRETE.

This detail is for general informational purposes only. The project design professional determines, in its sole discretion, whether this detail or a functionally equivalent detail is best suited for the project with respect to any architecture, engineering, and design requirements, including any local building code requirements. If this document is not reviewed and the product is not approved for use by a licensed design professional, the customer agrees that the detail may contain substantive flaws requiring correction, and hereby releases Tremco CPG Inc. from any and all liability related to the design and installation of the product. This detail is subject to change without notice. Contact Tremco to ensure you have the most recent version.

Non-Combustible Construction - Grade at Floor



Nudura Technical Support: 866-468-6299
International: +1 705-726-9499

Detail: Nudura 6" (152mm) Form Unit, Steel Joist Floor System, Exterior Side Wall,
Exterior Finish as Specified

Drawn by: JN

Checked by: KS

Scale: 1:8

Revision #: 04

Revised by: KAB

Date: 3/13/2024

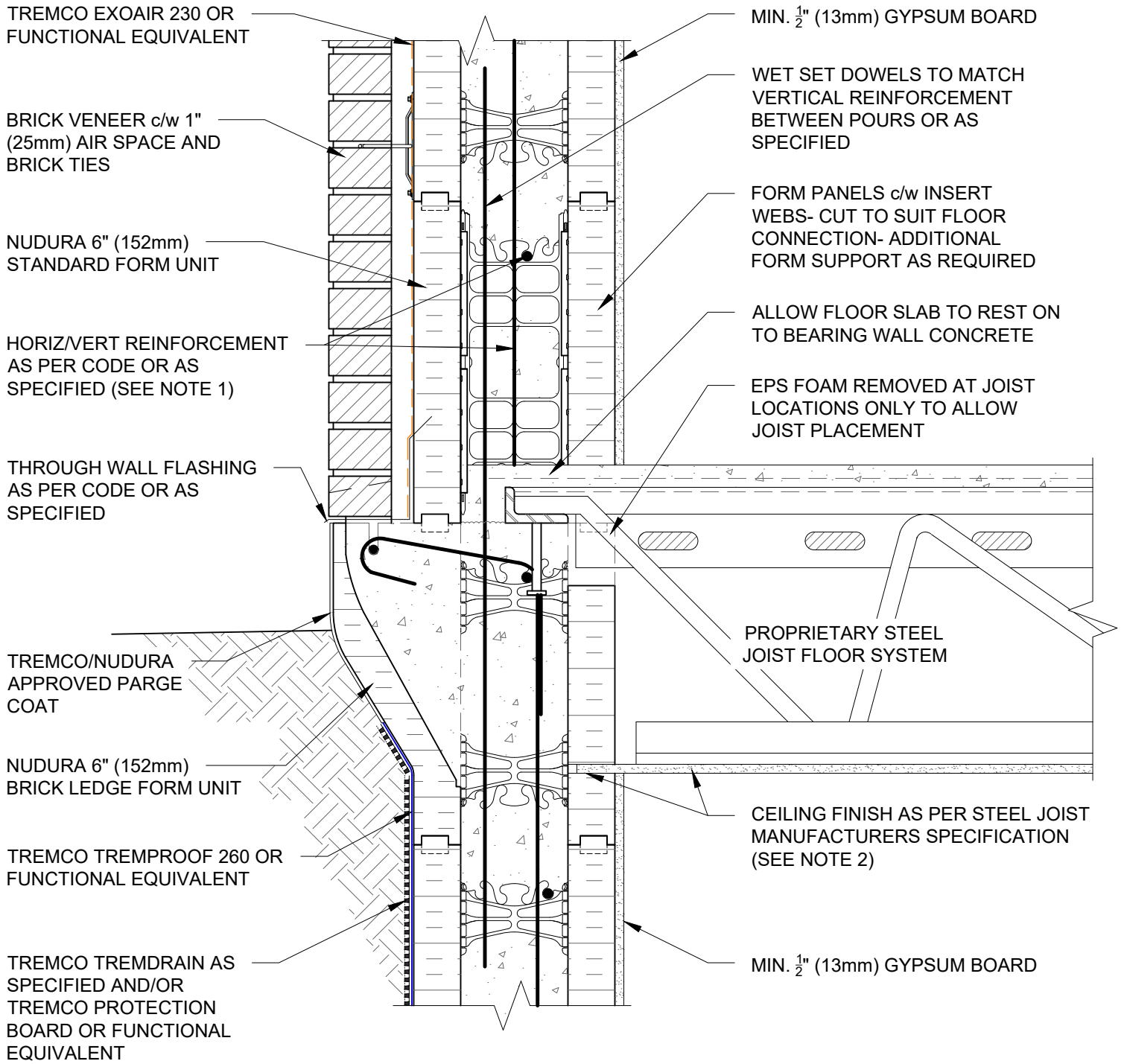
File Name:

D6B02



Construction Products Group

www.tremcocpg.com



- NOTES:
- 1) FOR OPTIMAL REINFORCEMENT PLACEMENT IN THE NUDURA FORM, SPACING OF HORIZONTAL REINFORCEMENT TO BE SPECIFIED AT 18" (457mm) O.C. AND VERTICAL REINFORCEMENT TO BE SPECIFIED AT MULTIPLES OF 8" (203mm) O.C. REFER TO NUDURA REINFORCEMENT PLACEMENT DETAILS.
 - 2) WHERE GYPSUM BOARD IS REQUIRED TO COMPLETE FIRE RATED ASSEMBLY, EPS FOAM KERF CUT TO ENABLE CEILING FINISH TO PROVIDE THERMAL BARRIER CONTACT TO CONCRETE.

This detail is for general informational purposes only. The project design professional determines, in its sole discretion, whether this detail or a functionally equivalent detail is best suited for the project with respect to any architecture, engineering, and design requirements, including any local building code requirements. If this document is not reviewed and the product is not approved for use by a licensed design professional, the customer agrees that the detail may contain substantive flaws requiring correction, and hereby releases Tremco CPG Inc. from any and all liability related to the design and installation of the product. This detail is subject to change without notice. Contact Tremco to ensure you have the most recent version.

Non-Combustible Construction - Grade at Floor



Detail: Nudura 6" (152mm) Brick Ledge Form Unit at Grade, Steel Joist Floor System, Exterior Bearing Wall, Brick Veneer Finish		
Drawn by: TVC	Checked by: KS	Scale: 1:8
Revision #: 04	Revised by: KAB	Date: 3/13/2024

File Name:

D6B07



TREMCO EXOAIR 230 OR
FUNCTIONAL EQUIVALENT

BRICK VENEER c/w 1"
(25mm) AIR SPACE AND
BRICK TIES

NUDURA 6" (152mm)
STANDARD FORM UNIT

HORIZ/VERT REINFORCEMENT
AS PER CODE OR AS
SPECIFIED (SEE NOTE 1)

THROUGH WALL FLASHING
AS PER CODE OR AS
SPECIFIED

TREMCO/NUDURA
APPROVED PARGE
COAT

NUDURA 6" (152mm)
BRICK LEDGE FORM UNIT

TREMCO TREMPROOF 260 OR
FUNCTIONAL EQUIVALENT

TREMCO TREMDRAIN AS
SPECIFIED AND/OR
TREMCO PROTECTION
BOARD OR FUNCTIONAL
EQUIVALENT

MIN. 1/2" (13mm) GYPSUM BOARD

WET SET DOWELS TO MATCH
VERTICAL REINFORCEMENT
BETWEEN POURS OR AS
SPECIFIED

FORM PANELS c/w INSERT
WEBS- CUT TO SUIT FLOOR
CONNECTION- ADDITIONAL
FORM SUPPORT AS REQUIRED

ALLOW FLOOR SLAB TO REST ON
TO BEARING WALL CONCRETE

PROPRIETARY STEEL
JOIST FLOOR SYSTEM

CEILING FINISH AS PER STEEL JOIST
MANUFACTURERS SPECIFICATION
(SEE NOTE 2)

MIN. 1/2" (13mm) GYPSUM BOARD

NOTES:

1) FOR OPTIMAL REINFORCEMENT PLACEMENT IN THE NUDURA FORM, SPACING OF HORIZONTAL REINFORCEMENT TO BE SPECIFIED AT 18" (457mm) O.C. AND VERTICAL REINFORCEMENT TO BE SPECIFIED AT MULTIPLES OF 8" (203mm) O.C. REFER TO NUDURA REINFORCEMENT PLACEMENT DETAILS.

2) WHERE GYPSUM BOARD IS REQUIRED TO COMPLETE FIRE RATED ASSEMBLY, EPS FOAM KERF CUT TO ENABLE CEILING FINISH TO PROVIDE THERMAL BARRIER CONTACT TO CONCRETE.

This detail is for general informational purposes only. The project design professional determines, in its sole discretion, whether this detail or a functionally equivalent detail is best suited for the project with respect to any architecture, engineering, and design requirements, including any local building code requirements. If this document is not reviewed and the product is not approved for use by a licensed design professional, the customer agrees that the detail may contain substantive flaws requiring correction, and hereby releases Tremco CPG Inc. from any and all liability related to the design and installation of the product. This detail is subject to change without notice. Contact Tremco to ensure you have the most recent version.

Non-Combustible Construction - Grade at Floor

Detail: Nudura 6" (152mm) Brick Ledge Form Unit at Grade, Steel Joist Floor System, Exterior Side Wall, Brick Veneer Finish

File Name:

Drawn by: TVC

Checked by: KS

Scale: 1:8

D6B08

Revision #: 04

Revised by: KAB

Date: 3/13/2024



Nudura Technical Support: 866-468-6299
International: +1 705-726-9499

www.tremcocpg.com



Construction Products Group

FORM PANELS c/w INSERT WEBS- CUT TO SUIT FLOOR CONNECTION- ADDITIONAL FORM SUPPORT AS REQUIRED

TREMCO EXOAIR 230 OR FUNCTIONAL EQUIVALENT

EXTERIOR FINISH AS SPECIFIED

WET SET DOWELS FIELD BENT INTO SLAB AS SPECIFIED

U BRACKET ANCHOR INSERT

TREMCO/NUDURA APPROVED PARGE COAT

HORIZ/VERT REINFORCEMENT AS PER CODE OR AS SPECIFIED

TREMCO TREMPROOF 260 OR FUNCTIONAL EQUIVALENT

TREMCO TREMDRAIN AS SPECIFIED AND/OR TREMCO PROTECTION BOARD OR FUNCTIONAL EQUIVALENT

NUDURA 6" (152mm) STANDARD FORM UNIT

GYPSUM BOARD FINISHED/FIRE STOP INSTALLED AT JOISTS AS PER CODE

COMPOSITE STEEL DECK-SLAB AND REINFORCEMENT AS SPECIFIED

OWSJ

INTERIOR INSULATION REMOVED AT JOIST LOCATIONS

WET SET DOWELS TO MATCH VERTICAL REINFORCEMENT BETWEEN POURS OR AS SPECIFIED

MIN. 1/2" (13mm) GYPSUM BOARD

NOTES:

1) FOR OPTIMAL REINFORCEMENT PLACEMENT IN THE NUDURA FORM, SPACING OF HORIZONTAL REINFORCEMENT TO BE SPECIFIED AT 18" (457mm) O.C. AND VERTICAL REINFORCEMENT TO BE SPECIFIED AT MULTIPLES OF 8" (203mm) O.C. REFER TO NUDURA REINFORCEMENT PLACEMENT DETAILS.

This detail is for general informational purposes only. The project design professional determines, in its sole discretion, whether this detail or a functionally equivalent detail is best suited for the project with respect to any architecture, engineering, and design requirements, including any local building code requirements. If this document is not reviewed and the product is not approved for use by a licensed design professional, the customer agrees that the detail may contain substantive flaws requiring correction, and hereby releases Tremco CPG Inc. from any and all liability related to the design and installation of the product. This detail is subject to change without notice. Contact Tremco to ensure you have the most recent version.

Non-Combustible Construction - Grade at Floor



Nudura Technical Support: 866-468-6299
International: +1 705-726-9499

Detail: Nudura 6" (152mm) Form Unit, Composite Steel Deck-Slab, Steel Joist on Ext. Bearing Wall, Exterior Finish as Specified

Drawn by: JN

Checked by: KS

Scale: 1:8

Revision #: 06

Revised by: KAB

Date: 3/13/2024

File Name:

D6C01



Construction Products Group

www.tremcocpg.com

TREMCO EXOAIR 230 OR
FUNCTIONAL EQUIVALENT

EXTERIOR FINISH
AS SPECIFIED

HORIZ/VERT REINFORCEMENT
AS PER CODE OR AS SPECIFIED
(SEE NOTE 1)

FORM PANELS c/w INSERT
WEBS- CUT TO SUIT FLOOR
CONNECTION- ADDITIONAL
FORM SUPPORT AS REQUIRED

WET SET DOWELS TO
MATCH VERTICAL
REINFORCEMENT BETWEEN
POURS OR AS SPECIFIED

WET SET FIELD DOWELS
FIELD BENT INTO SLAB AS
SPECIFIED

TREMCO/NUDURA APPROVED
PARGE COAT

TREMCO TREMPROOF 260 OR
FUNCTIONAL EQUIVALENT

TREMCO TREMDRAIN AS
SPECIFIED AND/OR
TREMCO PROTECTION
BOARD OR FUNCTIONAL
EQUIVALENT

NUDURA 6" (152mm)
STANDARD FORM UNIT

MIN. 1/2" (13mm) GYPSUM BOARD

STEEL DECK SUPPORT
WELDING ANCHOR INSERT

COMPOSITE STEEL DECK- SLAB
AND REINFORCEMENT AS
SPECIFIED

INTERIOR INSULATION TO BE
DISCONTINUOUS AT FLOOR LINES

OWSJ

MINIMUM 1/32" (0.8mm) x 2 1/2" (63.5mm)
GALVANIZED STEEL CHANNEL CAP
TO PROVIDE THERMAL BARRIER
PROTECTION

NOTES:

1) FOR OPTIMAL REINFORCEMENT PLACEMENT IN THE NUDURA FORM, SPACING OF HORIZONTAL REINFORCEMENT TO BE SPECIFIED AT 18" (457mm) O.C. AND VERTICAL REINFORCEMENT TO BE SPECIFIED AT MULTIPLES OF 8" (203mm) O.C. REFER TO NUDURA REINFORCEMENT PLACEMENT DETAILS.

This detail is for general informational purposes only. The project design professional determines, in its sole discretion, whether this detail or a functionally equivalent detail is best suited for the project with respect to any architecture, engineering, and design requirements, including any local building code requirements. If this document is not reviewed and the product is not approved for use by a licensed design professional, the customer agrees that the detail may contain substantive flaws requiring correction, and hereby releases Tremco CPG Inc. from any and all liability related to the design and installation of the product. This detail is subject to change without notice. Contact Tremco to ensure you have the most recent version.

Non-Combustible Construction - Grade at Floor

Detail: Nudura 6" (152mm) Form Unit, Composite Steel Deck-Slab, Steel Joist on
Side Wall, Exterior Finish as Specified

File Name:

Drawn by: JN

Checked by: KS

Scale: 1:8

D6C02

Revision #: 06

Revised by: KAB

Date: 3/13/2024



Nudura Technical Support: 866-468-6299
International: +1 705-726-9499

www.tremcocpg.com



Construction Products Group

FORM PANELS c/w INSERT WEBS- CUT TO SUIT FLOOR CONNECTION- ADDITIONAL FORM SUPPORT AS REQUIRED

TREMCO EXOAIR 230 OR FUNCTIONAL EQUIVALENT

BRICK VENEER c/w 1" (25mm) AIR SPACE AND BRICK TIES

WET SET DOWELS FIELD BENT INTO SLAB AS SPECIFIED

U BRACKET ANCHOR INSERT

THROUGH WALL FLASHING AS PER CODE OR AS SPECIFIED

TREMCO/NUDURA APPROVED PARGE COAT

NUDURA 6" (152mm) BRICK LEDGE FORM UNIT

TREMCO TREMPROOF 260 OR FUNCTIONAL EQUIVALENT

TREMCO TREMDRAIN AS SPECIFIED AND/OR TREMCO PROTECTION BOARD OR FUNCTIONAL EQUIVALENT

HORIZ/VERT REINFORCEMENT AS PER CODE OR AS SPECIFIED

GYPSUM BOARD FINISHED/FIRE STOP INSTALLED AT JOISTS AS PER CODE

COMPOSITE STEEL DECK-SLAB AND REINFORCEMENT AS SPECIFIED

OWSJ

INTERIOR INSULATION REMOVED AT JOIST LOCATIONS

WET SET DOWELS TO MATCH VERTICAL REINFORCEMENT BETWEEN POURS OR AS SPECIFIED

MIN. 1/2" (13mm) GYPSUM BOARD

NUDURA 6" (152mm) STANDARD FORM UNIT

NOTES:
1) FOR OPTIMAL REINFORCEMENT PLACEMENT IN THE NUDURA FORM, SPACING OF HORIZONTAL REINFORCEMENT TO BE SPECIFIED AT 18" (457mm) O.C. AND VERTICAL REINFORCEMENT TO BE SPECIFIED AT MULTIPLES OF 8" (203mm) O.C. REFER TO NUDURA REINFORCEMENT PLACEMENT DETAILS.

This detail is for general informational purposes only. The project design professional determines, in its sole discretion, whether this detail or a functionally equivalent detail is best suited for the project with respect to any architecture, engineering, and design requirements, including any local building code requirements. If this document is not reviewed and the product is not approved for use by a licensed design professional, the customer agrees that the detail may contain substantive flaws requiring correction, and hereby releases Tremco CPG Inc. from any and all liability related to the design and installation of the product. This detail is subject to change without notice. Contact Tremco to ensure you have the most recent version.

Non-Combustible Construction - Grade at Floor



Detail: Nudura 6" (152mm) Form Unit, Composite Steel Deck-Slab, Steel Joist on Ext. Bearing Wall, Brick Veneer Finish

Drawn by: JN

Checked by: KS

Scale: 1:8

Revision #: 06

Revised by: KAB

Date: 3/13/2024

File Name:

D6C05



TREMCO EXOAIR 230 OR
FUNCTIONAL EQUIVALENT

BRICK VENEER c/w 1"
(25mm) AIR SPACE AND
BRICK TIES

FORM PANELS c/w INSERT
WEBS- CUT TO SUIT FLOOR
CONNECTION- ADDITIONAL
FORM SUPPORT AS
REQUIRED

WET SET FIELD DOWELS
FIELD BENT INTO SLAB
AS SPECIFIED

THROUGH WALL
FLASHING AS PER
CODE OR AS
SPECIFIED

TREMCO/NUDURA
APPROVED PARGE
COAT

NUDURA 6" (152mm) BRICK
LEDGE FORM UNIT

TREMCO TREMPROOF 260 OR
FUNCTIONAL EQUIVALENT

TREMCO TREMDRAIN AS
SPECIFIED AND/OR
TREMCO PROTECTION
BOARD OR FUNCTIONAL
EQUIVALENT

HORIZ/VERT REINFORCEMENT AS
PER CODE OR AS SPECIFIED

NUDURA 6" (152mm)
STANDARD FORM UNIT

MIN. 1/2" (13mm)
GYPSUM BOARD

STEEL DECK SUPPORT
WELDING ANCHOR INSERT

COMPOSITE STEEL DECK-
SLAB AND REINFORCEMENT
AS SPECIFIED

INTERIOR INSULATION TO BE
DISCONTINUOUS AT FLOOR
LINES

OWSJ

MINIMUM 1/32" (0.8mm) x 2 1/2"
(63.5mm) GALVANIZED STEEL
CHANNEL CAP TO PROVIDE
THERMAL BARRIER PROTECTION

WET SET DOWELS TO MATCH
VERTICAL REINFORCEMENT
BETWEEN POURS OR AS
SPECIFIED

MIN. 1/2" (13mm) GYPSUM BOARD

NOTES:
1) FOR OPTIMAL REINFORCEMENT PLACEMENT IN THE NUDURA FORM,
SPACING OF HORIZONTAL REINFORCEMENT TO BE SPECIFIED AT 18"
(457mm) O.C. AND VERTICAL REINFORCEMENT TO BE SPECIFIED AT
MULTIPLES OF 8" (203mm) O.C. REFER TO NUDURA REINFORCEMENT
PLACEMENT DETAILS.

This detail is for general informational purposes only. The project design professional determines, in its sole discretion, whether this detail or a functionally equivalent detail is best suited for the project with respect to any architecture, engineering, and design requirements, including any local building code requirements. If this document is not reviewed and the product is not approved for use by a licensed design professional, the customer agrees that the detail may contain substantive flaws requiring correction, and hereby releases Tremco CPG Inc. from any and all liability related to the design and installation of the product. This detail is subject to change without notice. Contact Tremco to ensure you have the most recent version.

Non-Combustible Construction - Grade at Floor

Detail: Nudura 6" (152mm) Form Unit, Composite Steel Deck-Slab, Steel Joist on
Side Wall, Brick Veneer Finish

File Name:

Drawn by: TVC

Checked by: KS

Scale: 1:8

D6C06

Revision #: 07

Revised by: KAB

Date: 3/13/2024

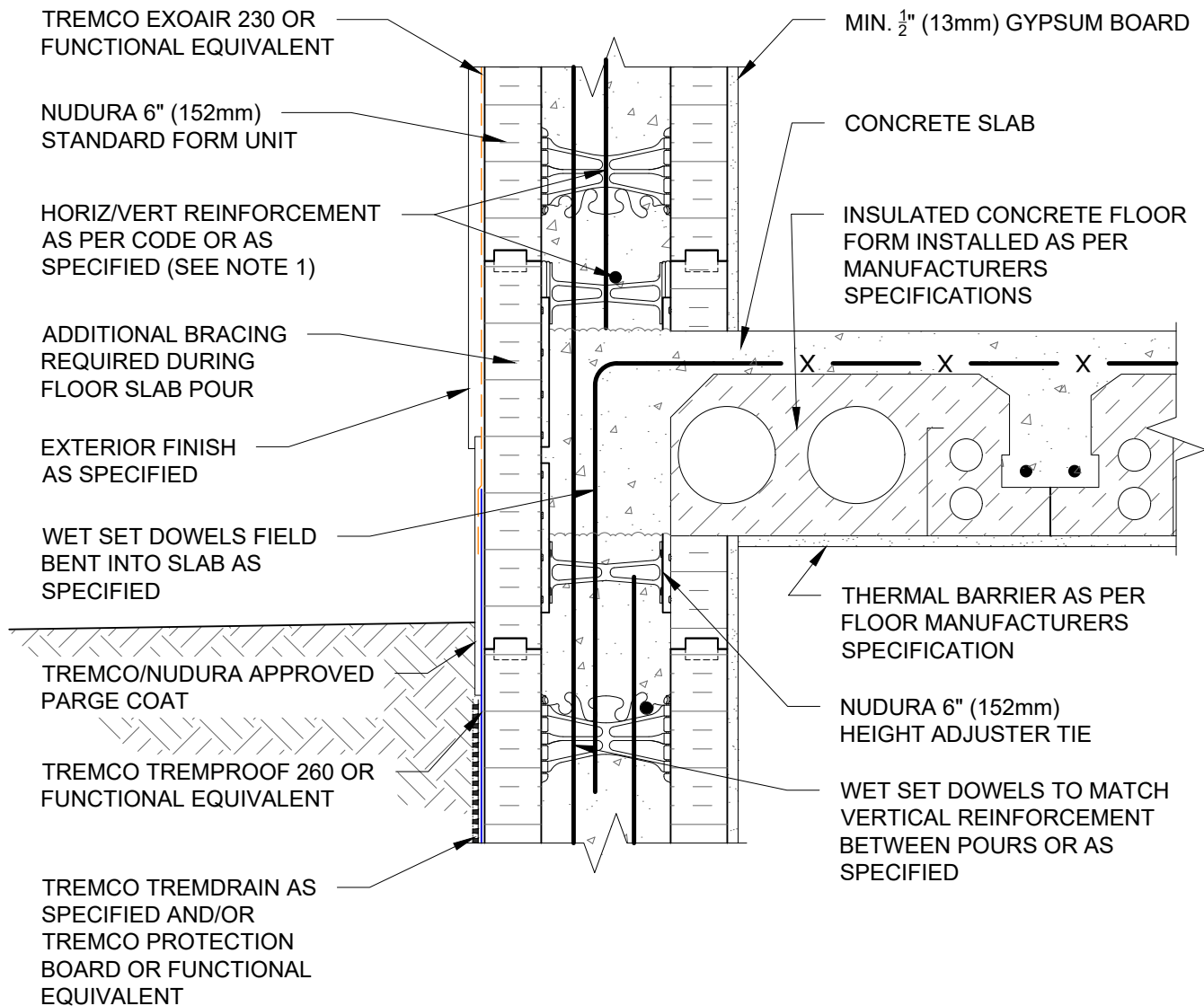


Nudura Technical Support: 866-468-6299
International: +1 705-726-9499



Construction Products Group

www.tremcocpg.com



NOTES:
 1) FOR OPTIMAL REINFORCEMENT PLACEMENT IN THE NUDURA FORM, SPACING OF HORIZONTAL REINFORCEMENT TO BE SPECIFIED AT 18" (457mm) O.C. AND VERTICAL REINFORCEMENT TO BE SPECIFIED AT MULTIPLES OF 8" (203mm) O.C. REFER TO NUDURA REINFORCEMENT PLACEMENT DETAILS.

This detail is for general informational purposes only. The project design professional determines, in its sole discretion, whether this detail or a functionally equivalent detail is best suited for the project with respect to any architecture, engineering, and design requirements, including any local building code requirements. If this document is not reviewed and the product is not approved for use by a licensed design professional, the customer agrees that the detail may contain substantive flaws requiring correction, and hereby releases Tremco CPG Inc. from any and all liability related to the design and installation of the product. This detail is subject to change without notice. Contact Tremco to ensure you have the most recent version.

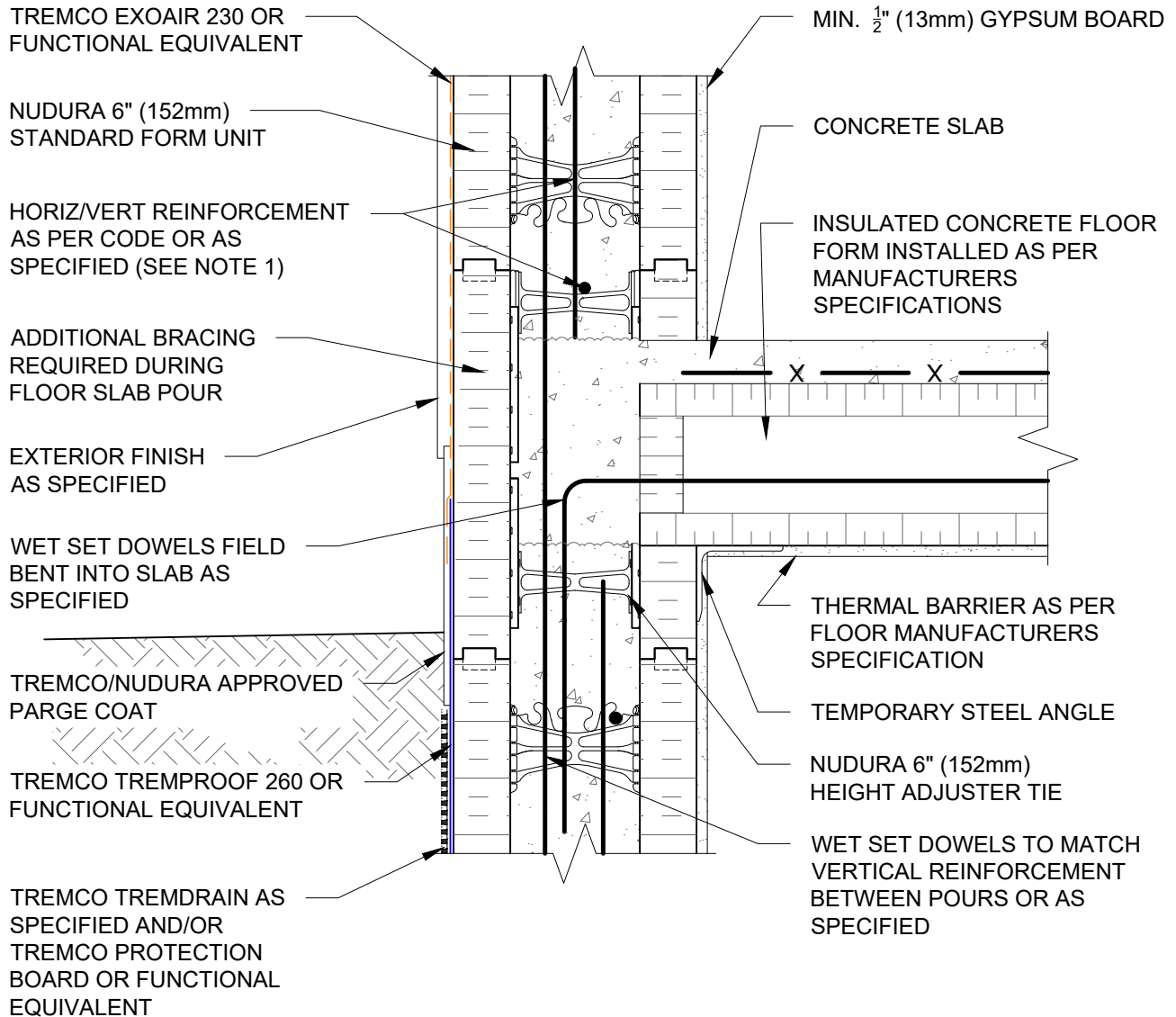
Non-Combustible Construction - Grade at Floor



Detail: Nudura 6" (152mm) Form Unit, ICFS Connection, ICFS Resting on Form at Grade, Exterior Side Wall, Exterior Finish as Specified		
Drawn by: TVC	Checked by: KS	Scale: 1:8
Revision #: 05	Revised by: KAB	Date: 3/13/2024

File Name:
 D6D07





NOTES:
 1) FOR OPTIMAL REINFORCEMENT PLACEMENT IN THE NUDURA FORM, SPACING OF HORIZONTAL REINFORCEMENT TO BE SPECIFIED AT 18" (457mm) O.C. AND VERTICAL REINFORCEMENT TO BE SPECIFIED AT MULTIPLES OF 8" (203mm) O.C. REFER TO NUDURA REINFORCEMENT PLACEMENT DETAILS.

This detail is for general informational purposes only. The project design professional determines, in its sole discretion, whether this detail or a functionally equivalent detail is best suited for the project with respect to any architecture, engineering, and design requirements, including any local building code requirements. If this document is not reviewed and the product is not approved for use by a licensed design professional, the customer agrees that the detail may contain substantive flaws requiring correction, and hereby releases Tremco CPG Inc. from any and all liability related to the design and installation of the product. This detail is subject to change without notice. Contact Tremco to ensure you have the most recent version.

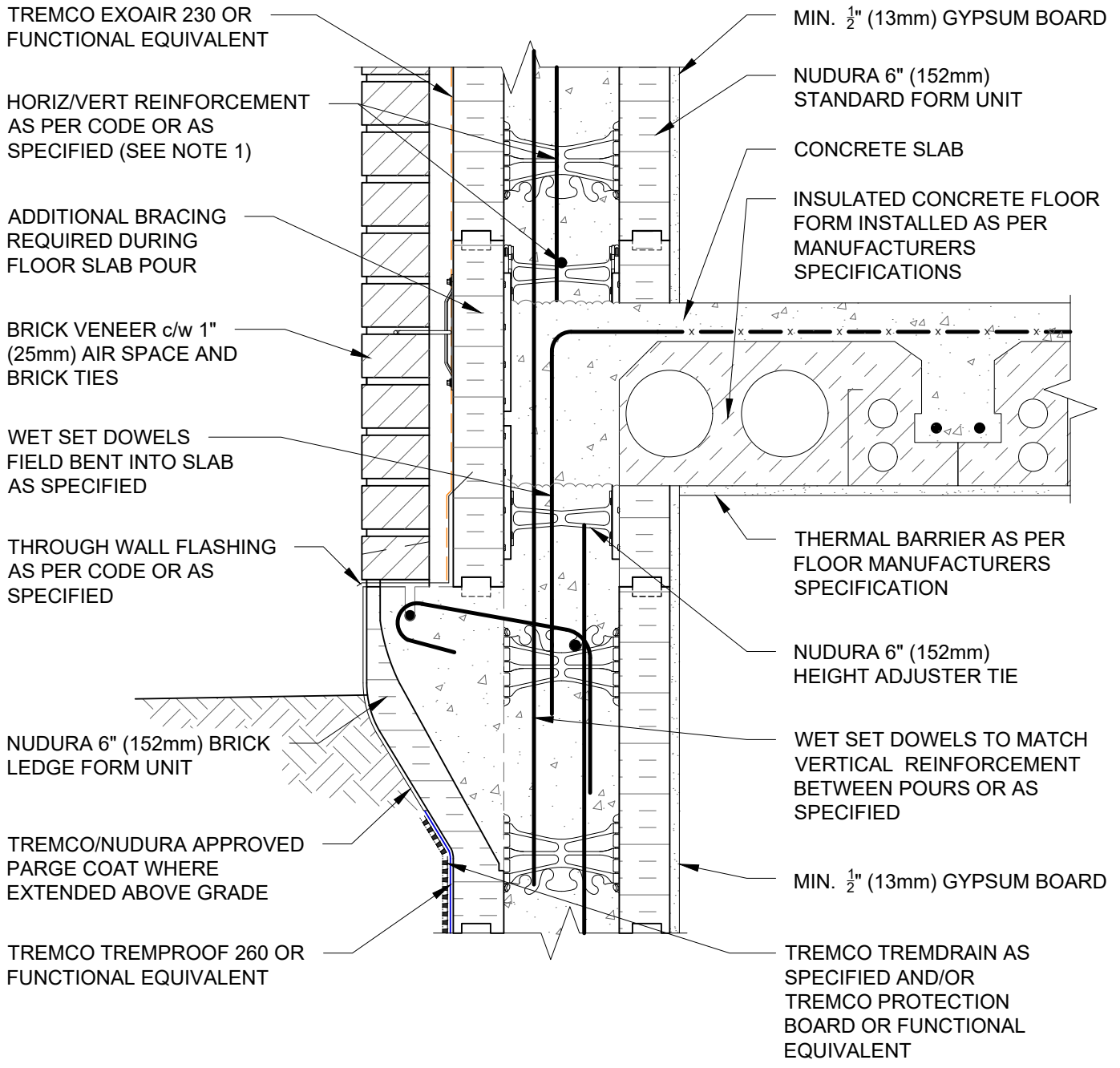
Non-Combustible Construction - Grade at Floor



Detail: Nudura 6" (152mm) Form Unit, ICFS Connection, ICFS Resting on Form, Exterior Bearing Wall at Grade, Exterior Finish as Specified		
Drawn by: TVC	Checked by: KS	Scale: 1:8
Revision #: 05	Revised by: KAB	Date: 3/13/2024

File Name:
D6D08





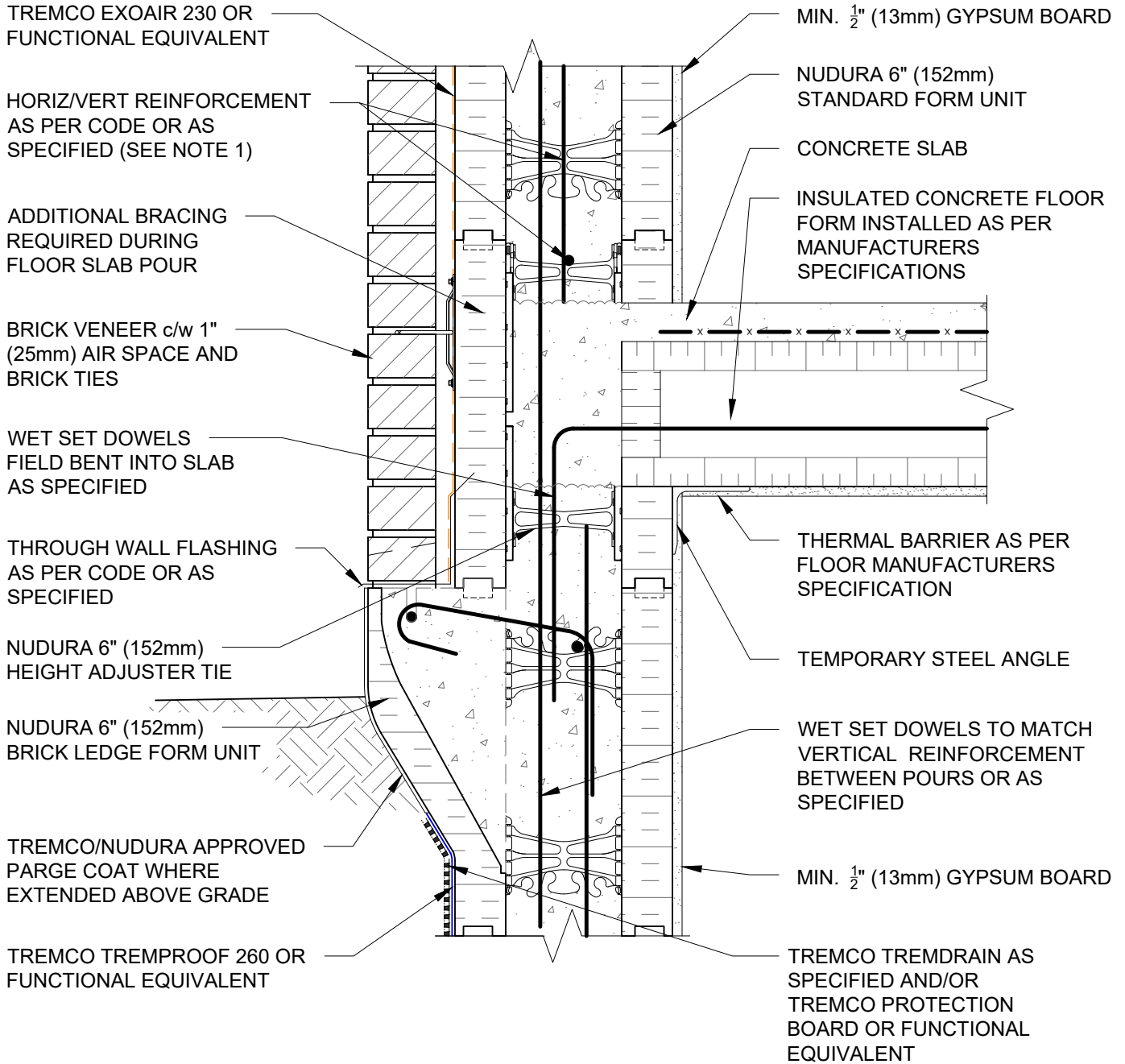


NOTES:
 1) FOR OPTIMAL REINFORCEMENT PLACEMENT IN THE NUDURA FORM, SPACING OF HORIZONTAL REINFORCEMENT TO BE SPECIFIED AT 18" (457mm) O.C. AND VERTICAL REINFORCEMENT TO BE SPECIFIED AT MULTIPLES OF 8" (203mm) O.C. REFER TO NUDURA REINFORCEMENT PLACEMENT DETAILS.

This detail is for general informational purposes only. The project design professional determines, in its sole discretion, whether this detail or a functionally equivalent detail is best suited for the project with respect to any architecture, engineering, and design requirements, including any local building code requirements. If this document is not reviewed and the product is not approved for use by a licensed design professional, the customer agrees that the detail may contain substantive flaws requiring correction, and hereby releases Tremco CPG Inc. from any and all liability related to the design and installation of the product. This detail is subject to change without notice. Contact Tremco to ensure you have the most recent version.

Non-Combustible Construction - Grade at Floor

 Nudura Technical Support: 866-468-6299 International: +1 705-726-9499	Detail: Nudura 6" (152mm) Form Unit, ICFS Connection, ICFS Resting on Form, Exterior Side Wall at Grade, Brick Veneer Finish			File Name:	
	Drawn by: TVC	Checked by: KS	Scale: 1:8	D6D09	
	Revision #: 05	Revised by: KAB	Date: 3/13/2024		
www.tremcocpg.com			 Construction Products Group		



NOTES:
 1) FOR OPTIMAL REINFORCEMENT PLACEMENT IN THE NUDURA FORM, SPACING OF HORIZONTAL REINFORCEMENT TO BE SPECIFIED AT 18" (457mm) O.C. AND VERTICAL REINFORCEMENT TO BE SPECIFIED AT MULTIPLES OF 8" (203mm) O.C. REFER TO NUDURA REINFORCEMENT PLACEMENT DETAILS.

This detail is for general informational purposes only. The project design professional determines, in its sole discretion, whether this detail or a functionally equivalent detail is best suited for the project with respect to any architecture, engineering, and design requirements, including any local building code requirements. If this document is not reviewed and the product is not approved for use by a licensed design professional, the customer agrees that the detail may contain substantive flaws requiring correction, and hereby releases Tremco CPG Inc. from any and all liability related to the design and installation of the product. This detail is subject to change without notice. Contact Tremco to ensure you have the most recent version.

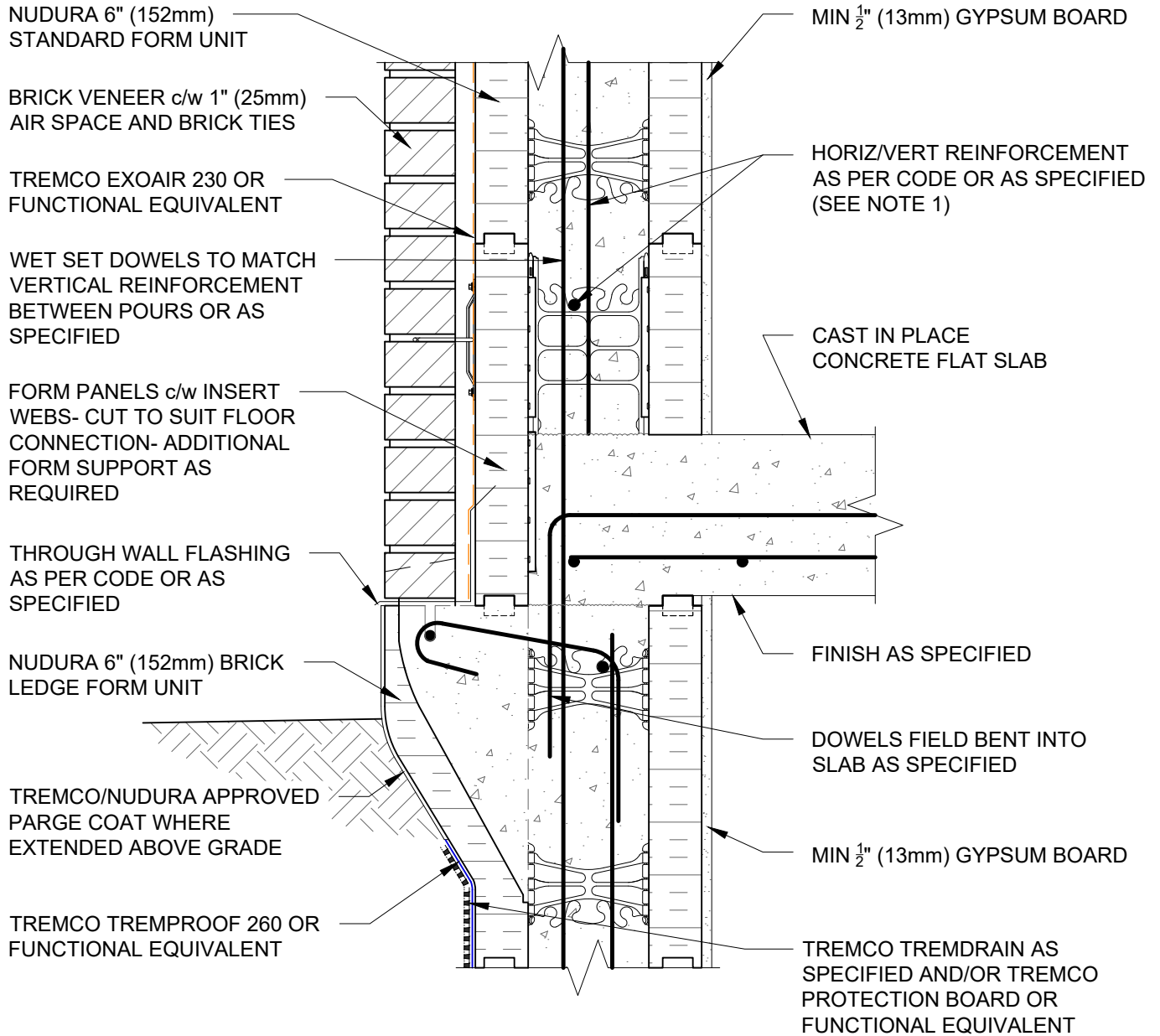
Non-Combustible Construction - Grade at Floor



Detail: Nudura 6" (152mm) Form Unit, ICFS Connection, ICFS Resting on Form, Exterior Bearing Wall at Grade, Brick Veneer Finish		
Drawn by: TVC	Checked by: KS	Scale: 1:8
Revision #: 06	Revised by: KAB	Date: 3/13/2024

File Name:
 D6D10





NOTES:
 1) FOR OPTIMAL REINFORCEMENT PLACEMENT IN THE NUDURA FORM, SPACING OF HORIZONTAL REINFORCEMENT TO BE SPECIFIED AT 18" (457mm) O.C. AND VERTICAL REINFORCEMENT TO BE SPECIFIED AT MULTIPLES OF 8" (203mm) O.C. REFER TO NUDURA REINFORCEMENT PLACEMENT DETAILS.

This detail is for general informational purposes only. The project design professional determines, in its sole discretion, whether this detail or a functionally equivalent detail is best suited for the project with respect to any architecture, engineering, and design requirements, including any local building code requirements. If this document is not reviewed and the product is not approved for use by a licensed design professional, the customer agrees that the detail may contain substantive flaws requiring correction, and hereby releases Tremco CPG Inc. from any and all liability related to the design and installation of the product. This detail is subject to change without notice. Contact Tremco to ensure you have the most recent version.

Non-Combustible Construction - Grade at Floor



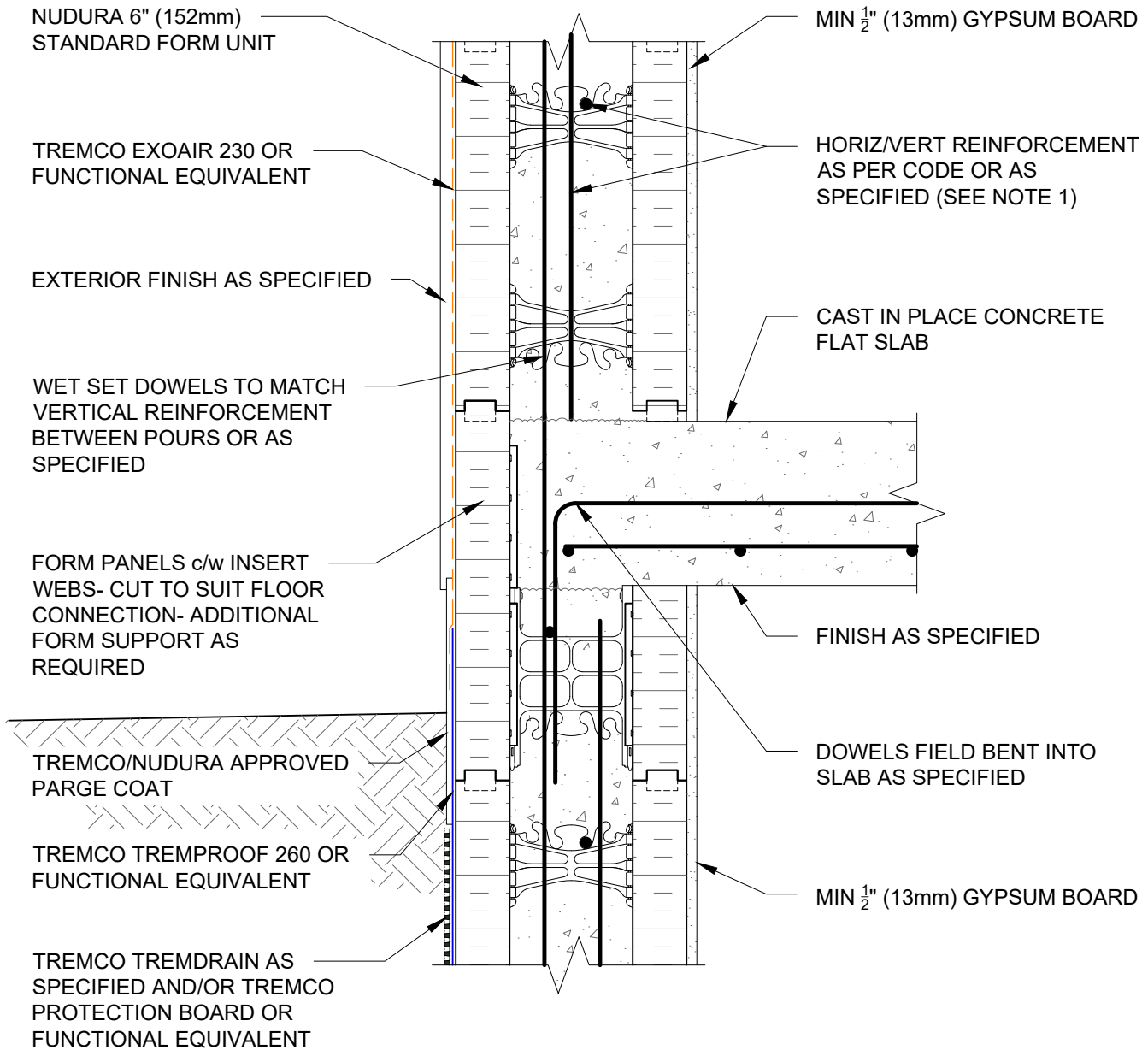
Detail: Nudura 6" (152mm) Brick Ledge Form Unit, Concrete Flat Plate, Bearing Wall, Brick Veneer Finish

Drawn by: KS	Checked by: KS	Scale: 1:8
Revision #: 01	Revised by: KAB	Date: 3/13/2024

File Name:

D6E01





NOTES:
 1) FOR OPTIMAL REINFORCEMENT PLACEMENT IN THE NUDURA FORM, SPACING OF HORIZONTAL REINFORCEMENT TO BE SPECIFIED AT 18" (457mm) O.C. AND VERTICAL REINFORCEMENT TO BE SPECIFIED AT MULTIPLES OF 8" (203mm) O.C. REFER TO NUDURA REINFORCEMENT PLACEMENT DETAILS.

This detail is for general informational purposes only. The project design professional determines, in its sole discretion, whether this detail or a functionally equivalent detail is best suited for the project with respect to any architecture, engineering, and design requirements, including any local building code requirements. If this document is not reviewed and the product is not approved for use by a licensed design professional, the customer agrees that the detail may contain substantive flaws requiring correction, and hereby releases Tremco CPG Inc. from any and all liability related to the design and installation of the product. This detail is subject to change without notice. Contact Tremco to ensure you have the most recent version.

Non-Combustible Construction - Grade at Floor



Detail: Nudura 6" (152mm) Form Unit, Concrete Flat Plate, Bearing Wall, Exterior Finish as Specified		
Drawn by: KS	Checked by: KS	Scale: 1:8
Revision #: 01	Revised by: KAB	Date: 3/13/2024

File Name:
D6E02

